



## ALL04\_ Mappe Climatiche e Scenari Futuri – Indicatori climatici

Indirizzi per la stesura della Strategia Regionale di  
adattamento ai cambiamenti climatici (SRACC)

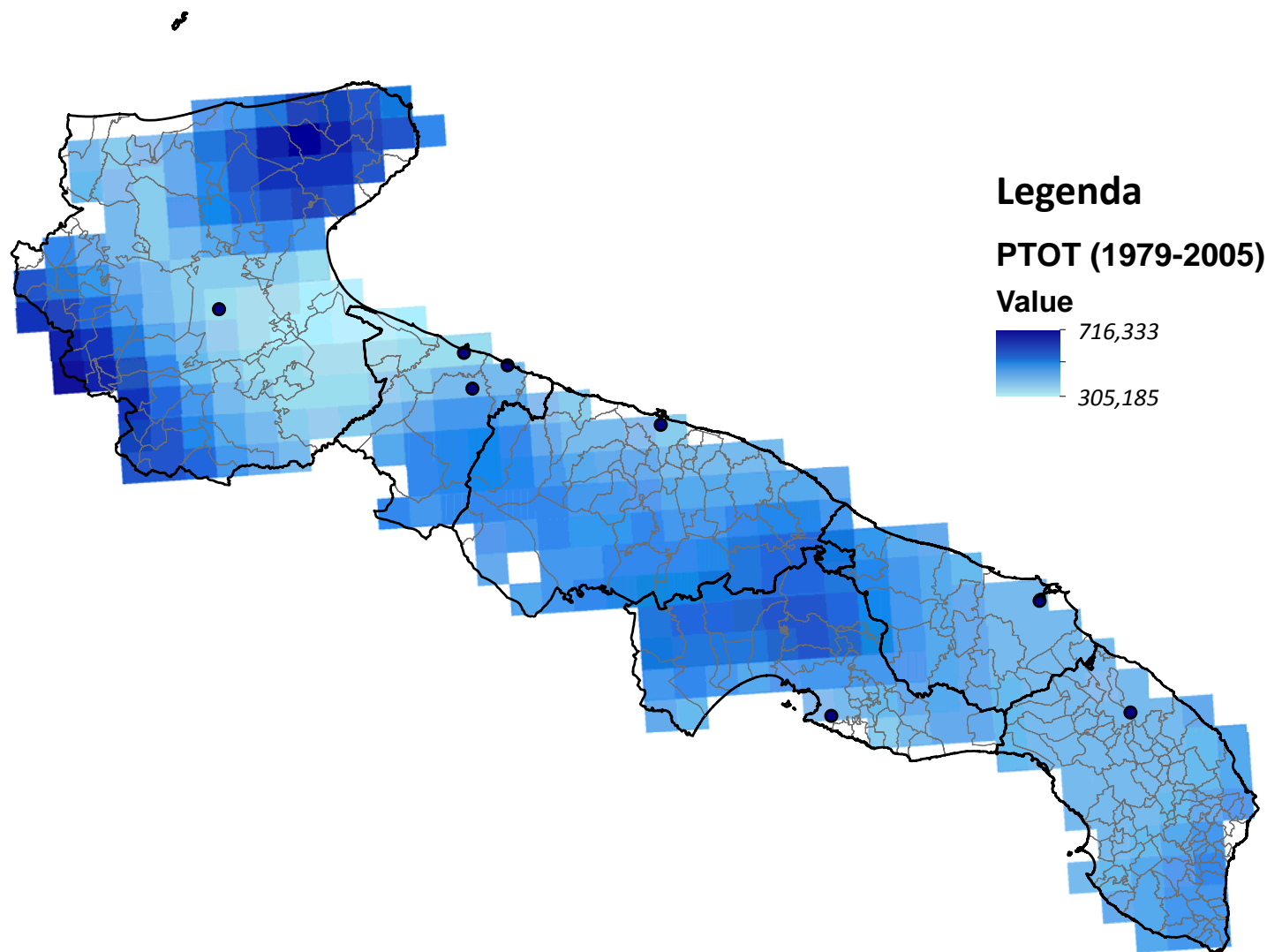
*Luglio 2023*

### Gruppo di Lavoro:

Dipartimento Ambiente, Paesaggio e Qualità Urbana della Regione Puglia

TerrAria srl

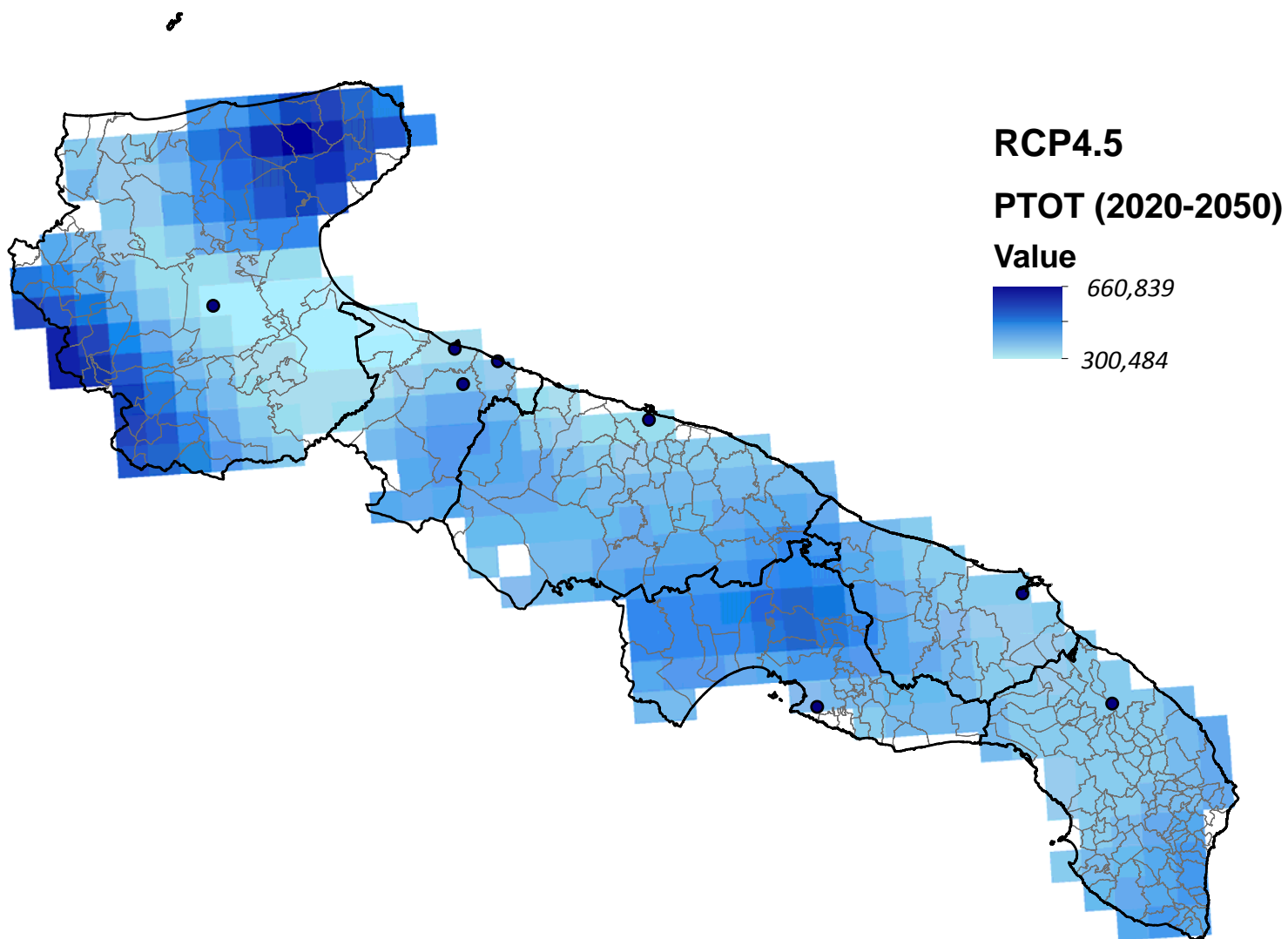
P\_ Precipitazione totale annua (mm)

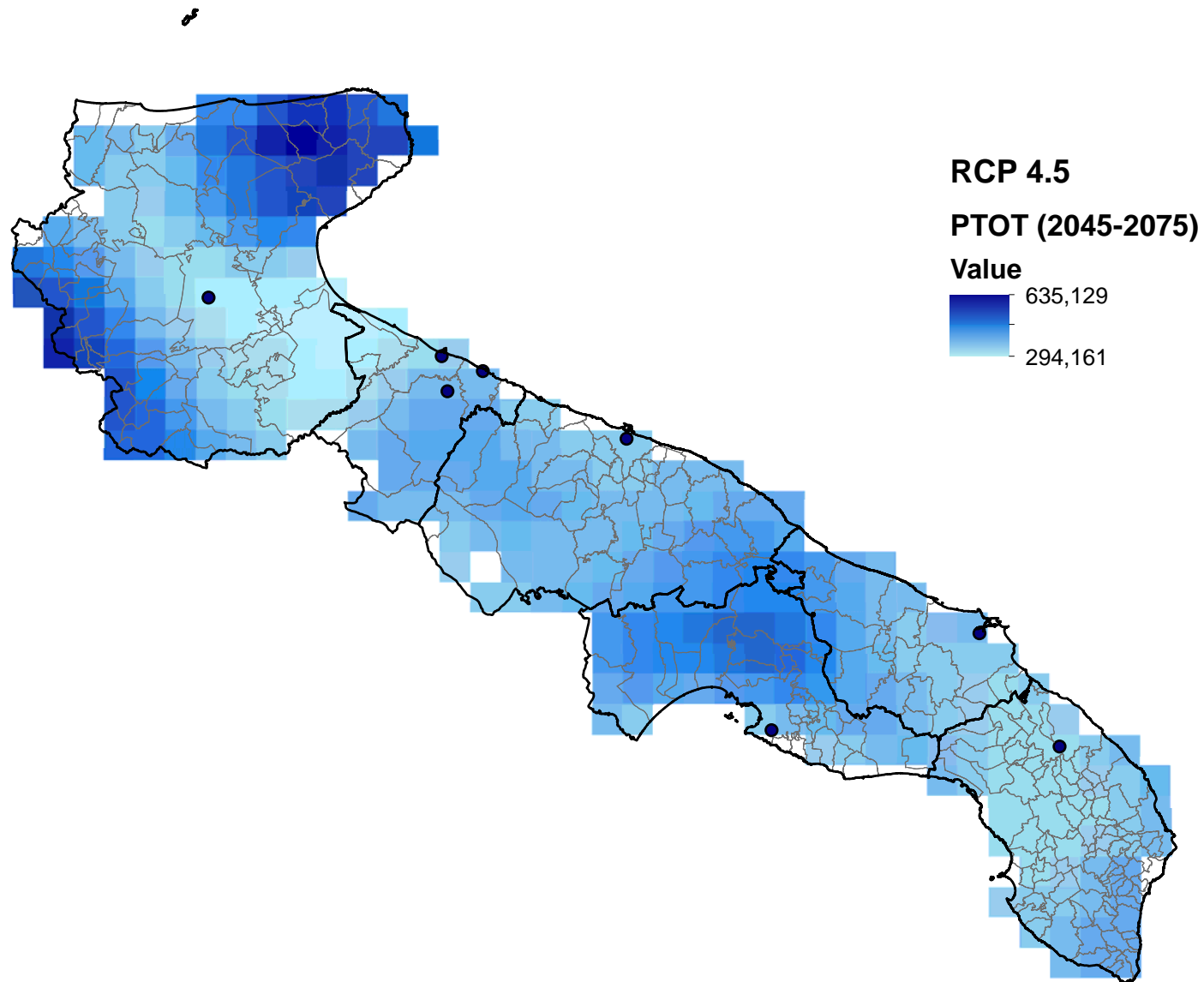




P

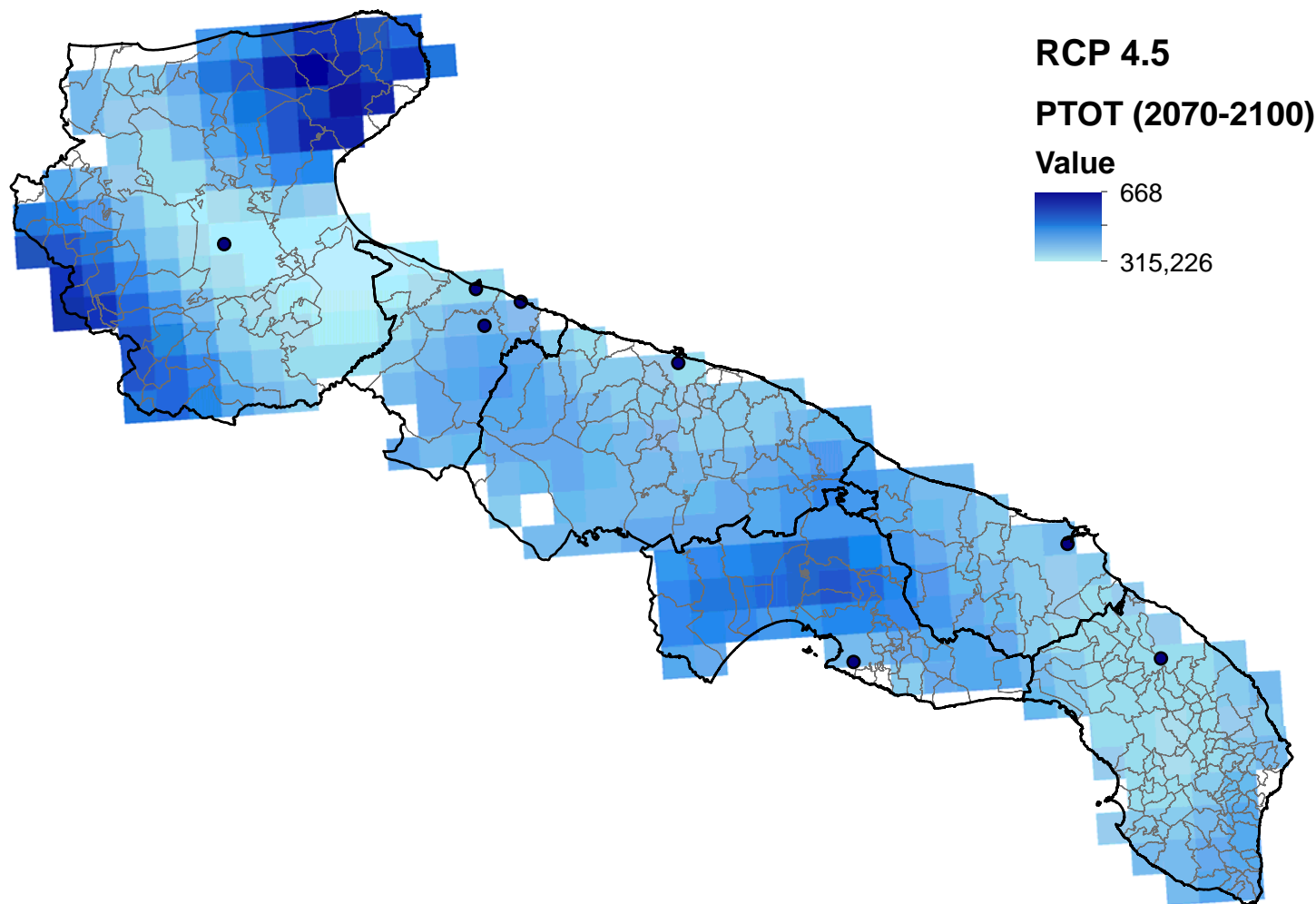
Precipitazione totale annua (mm)





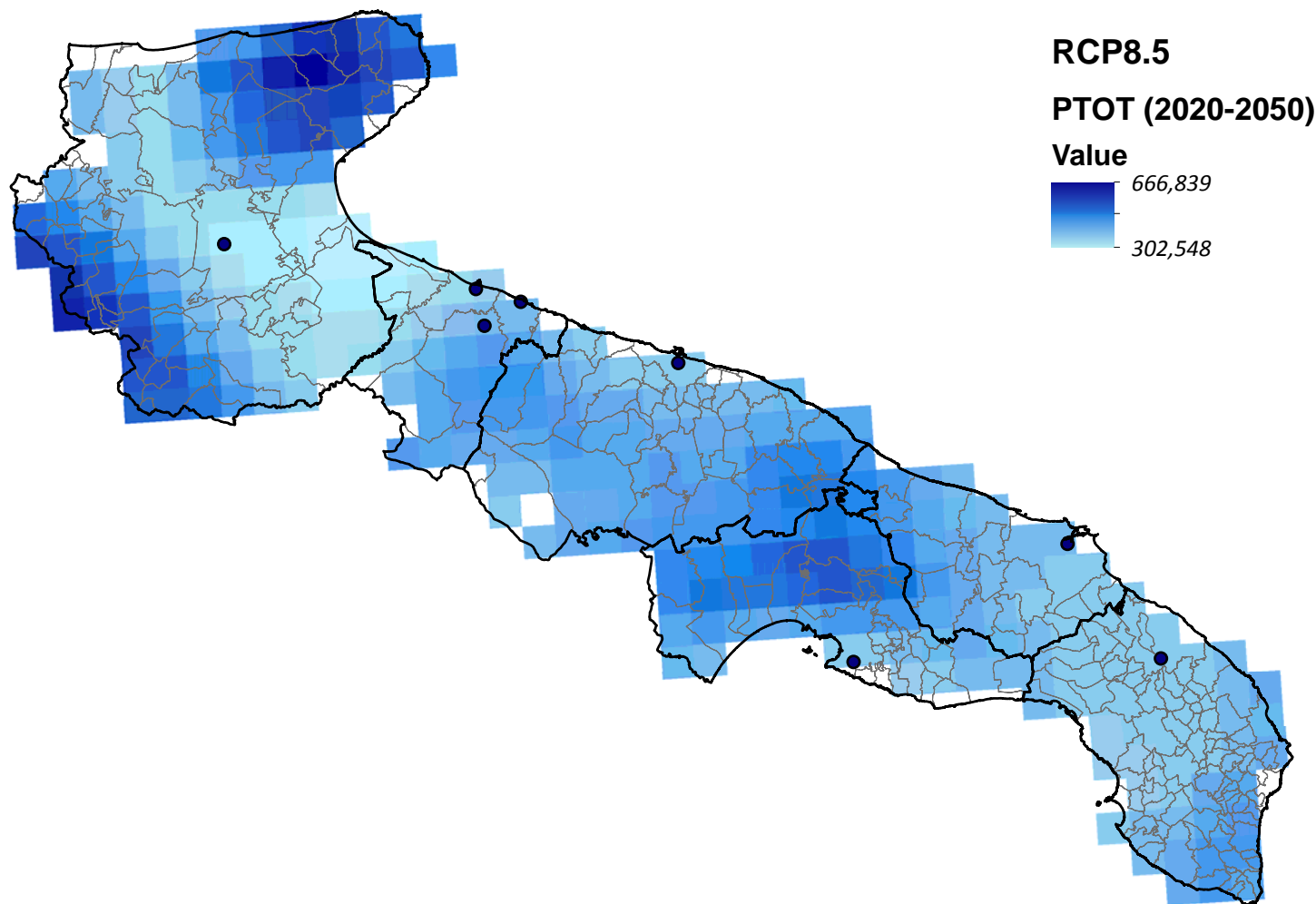
P

Precipitazione totale annua (mm)



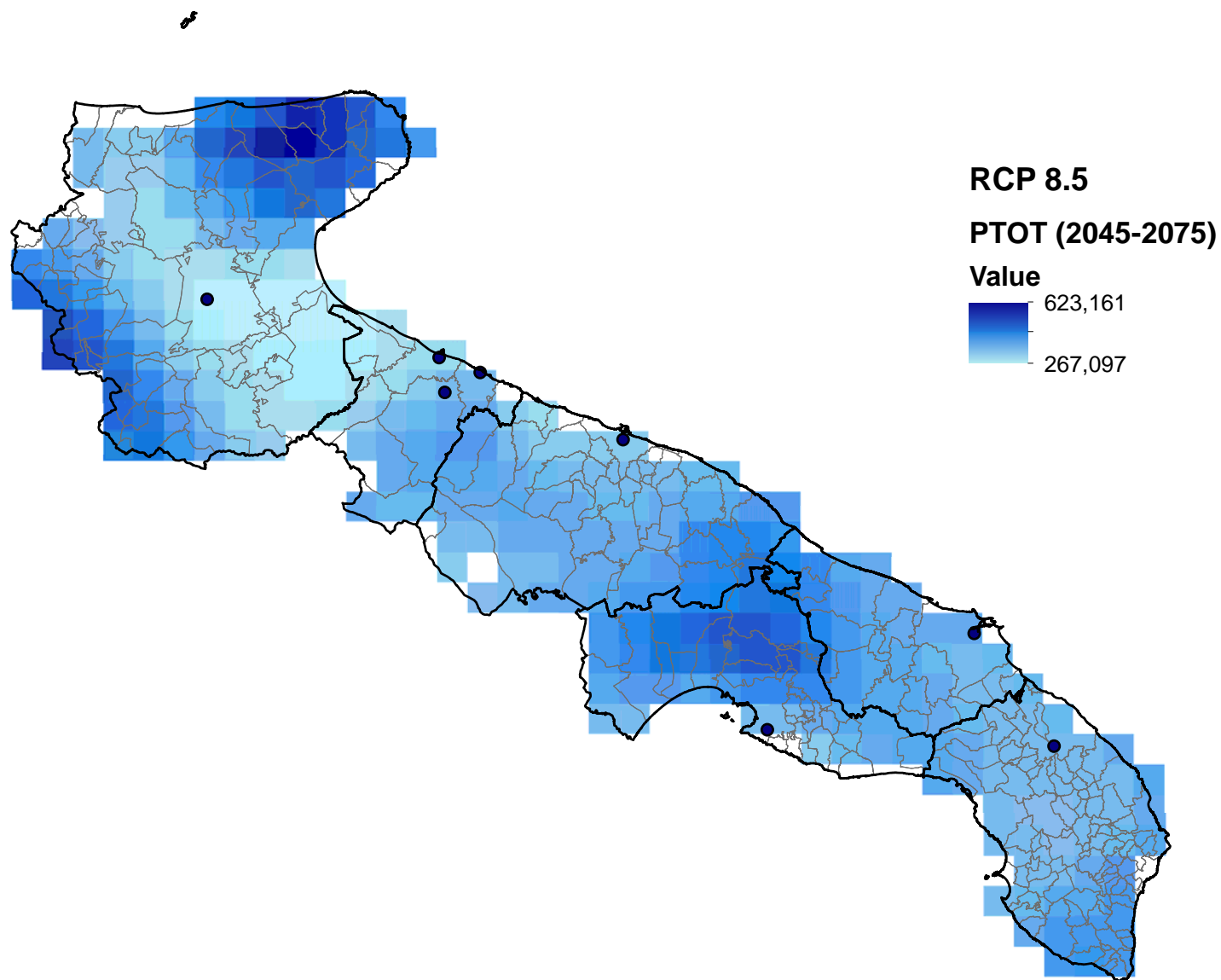
P

Precipitazione totale annua (mm)



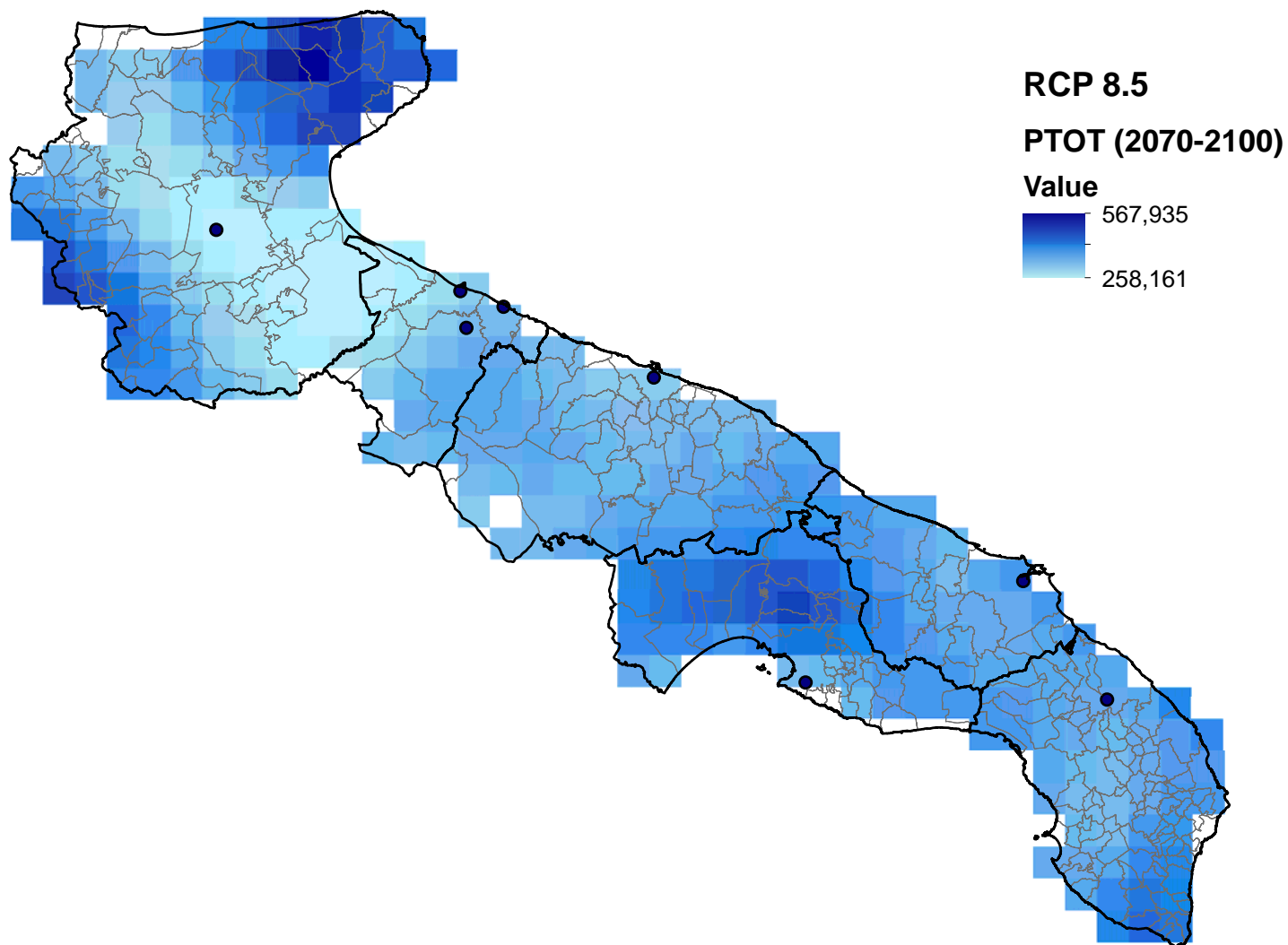
P

Precipitazione totale annua (mm)



P

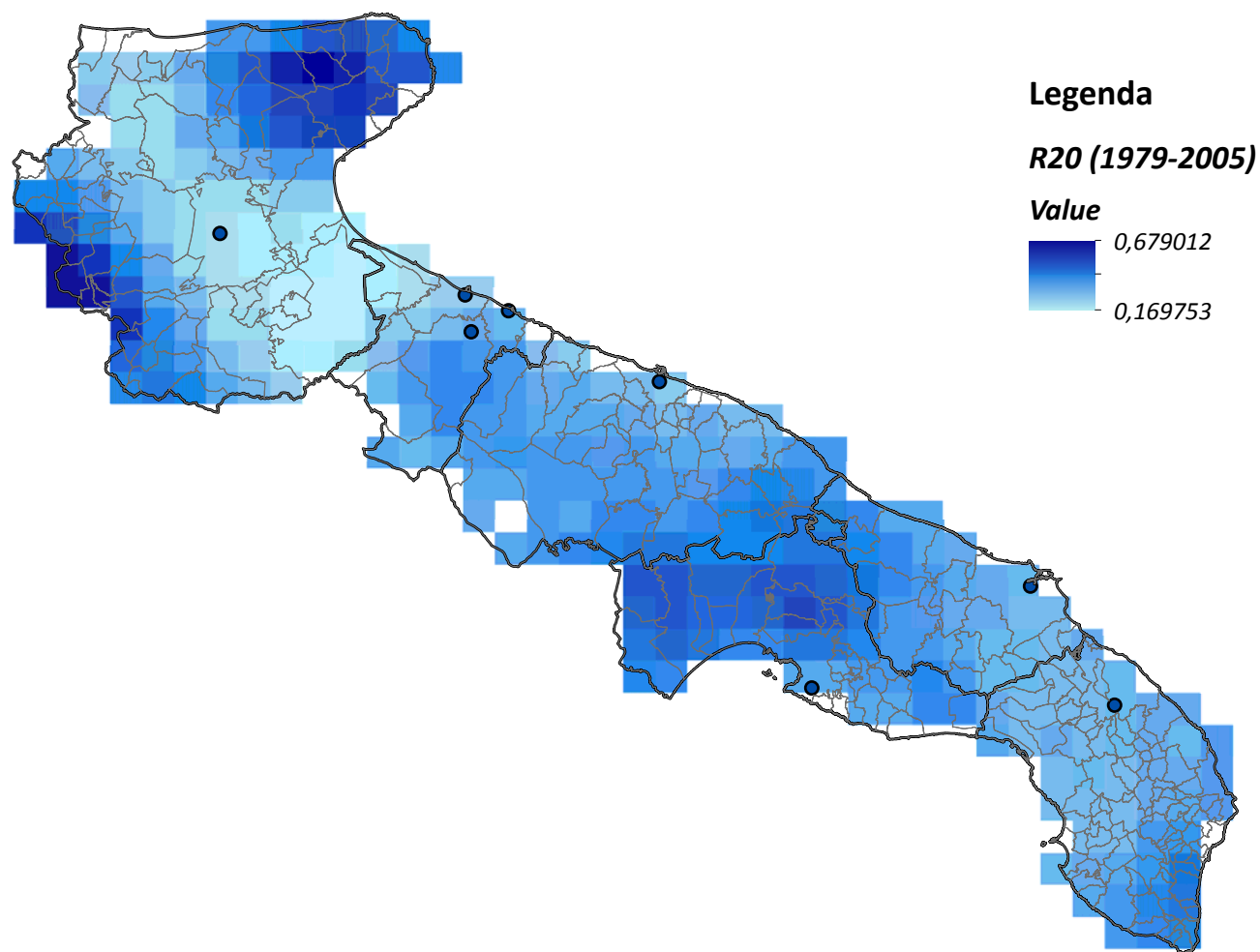
Precipitazione totale annua (mm)

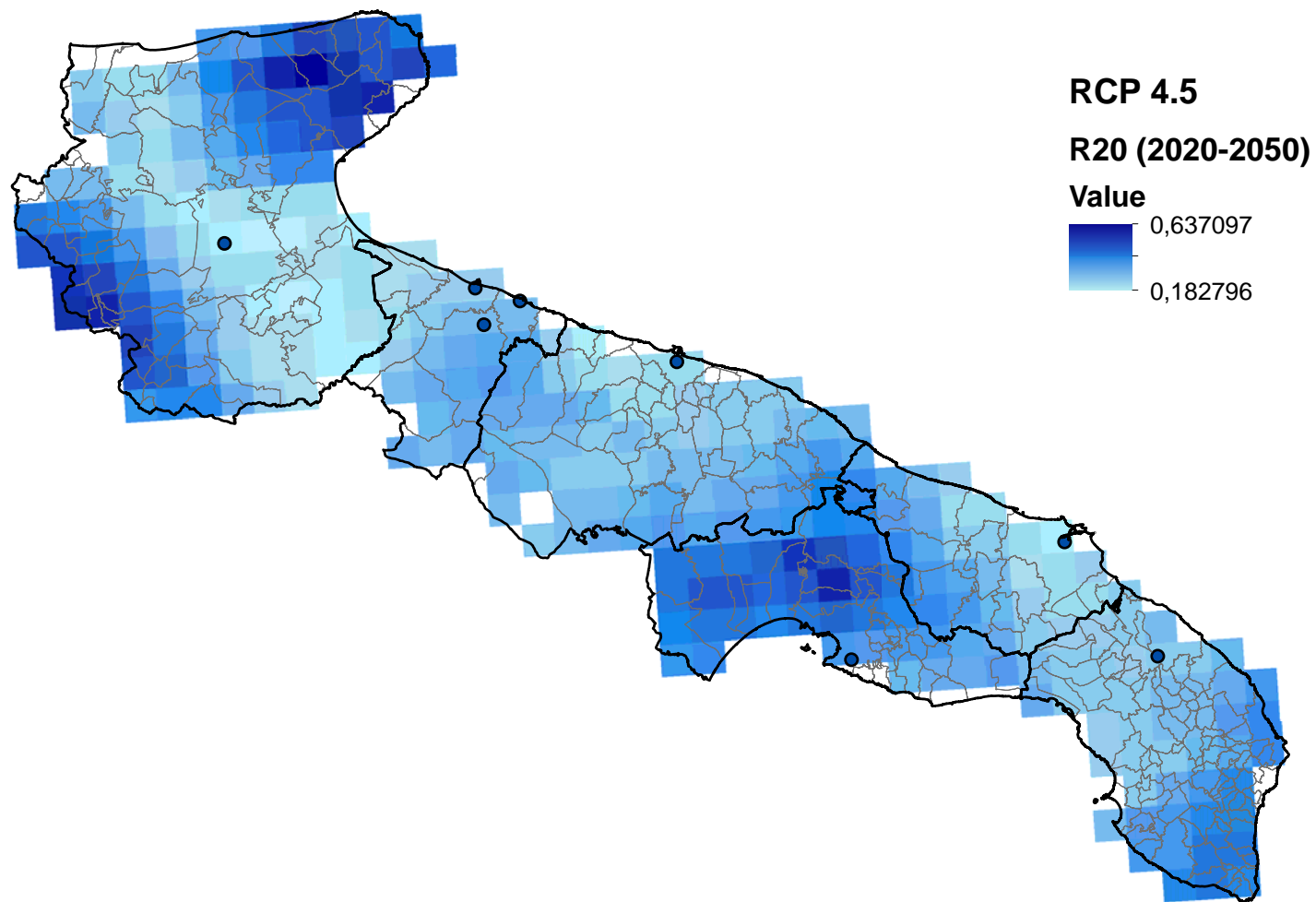


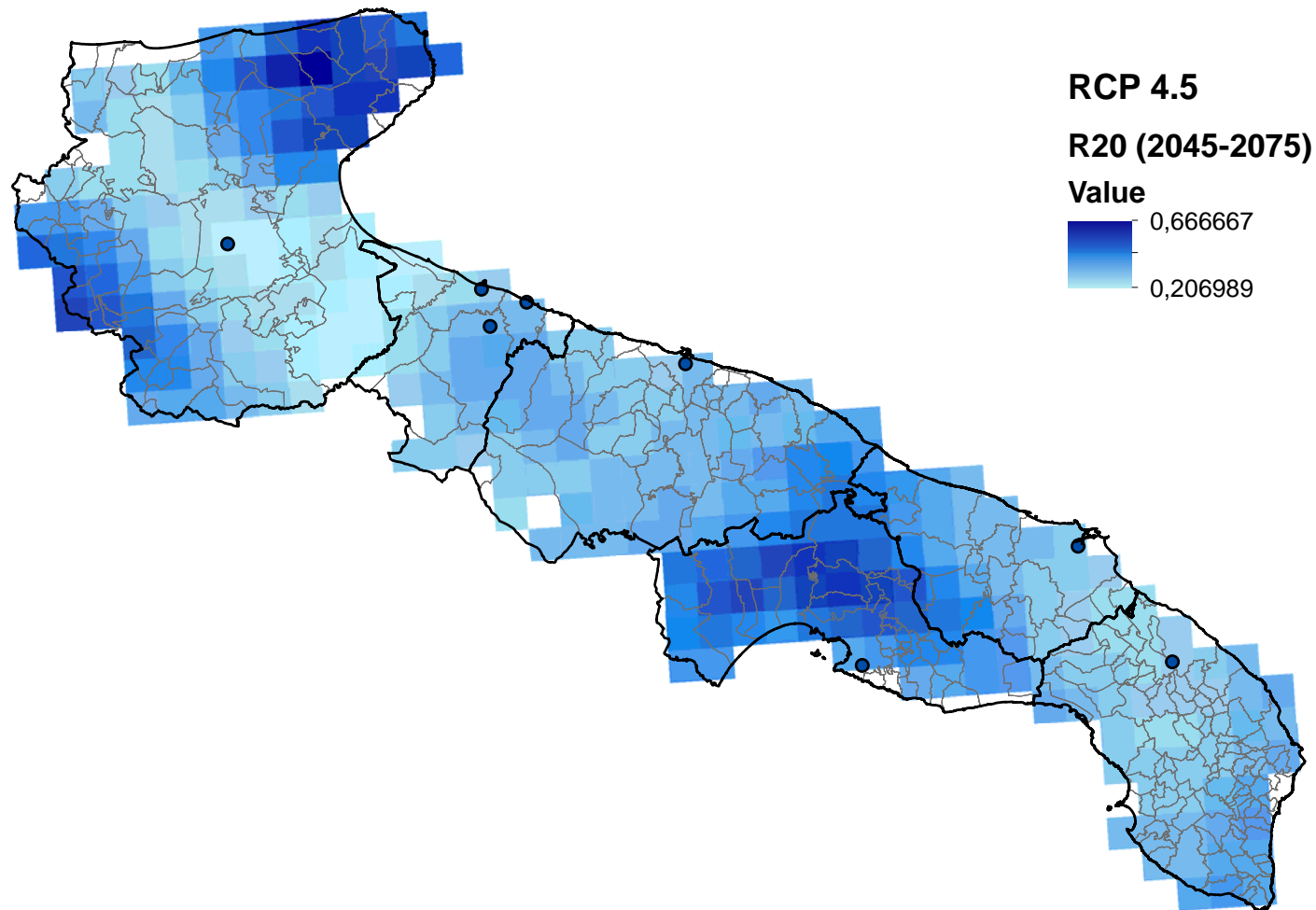


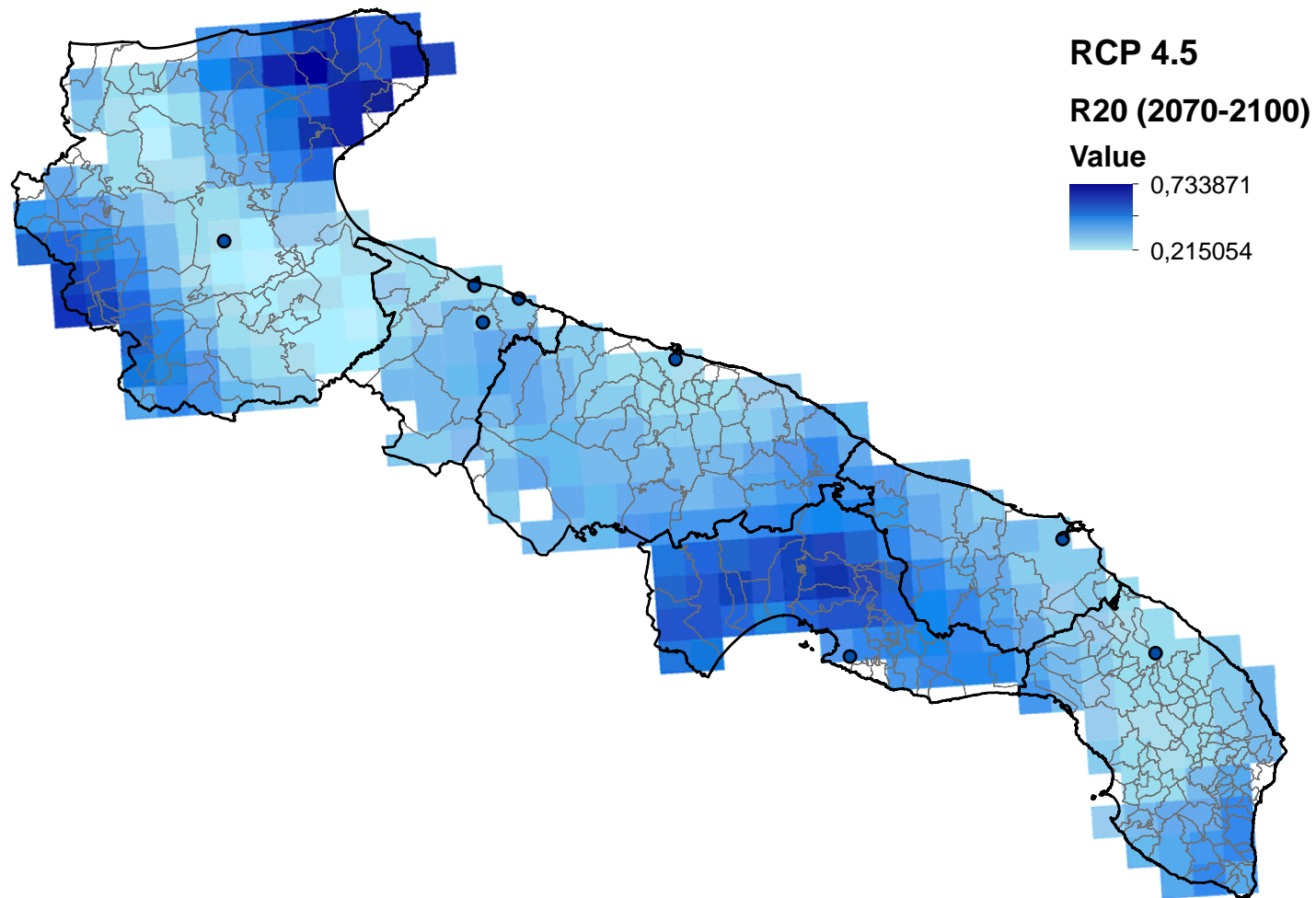
**R20**

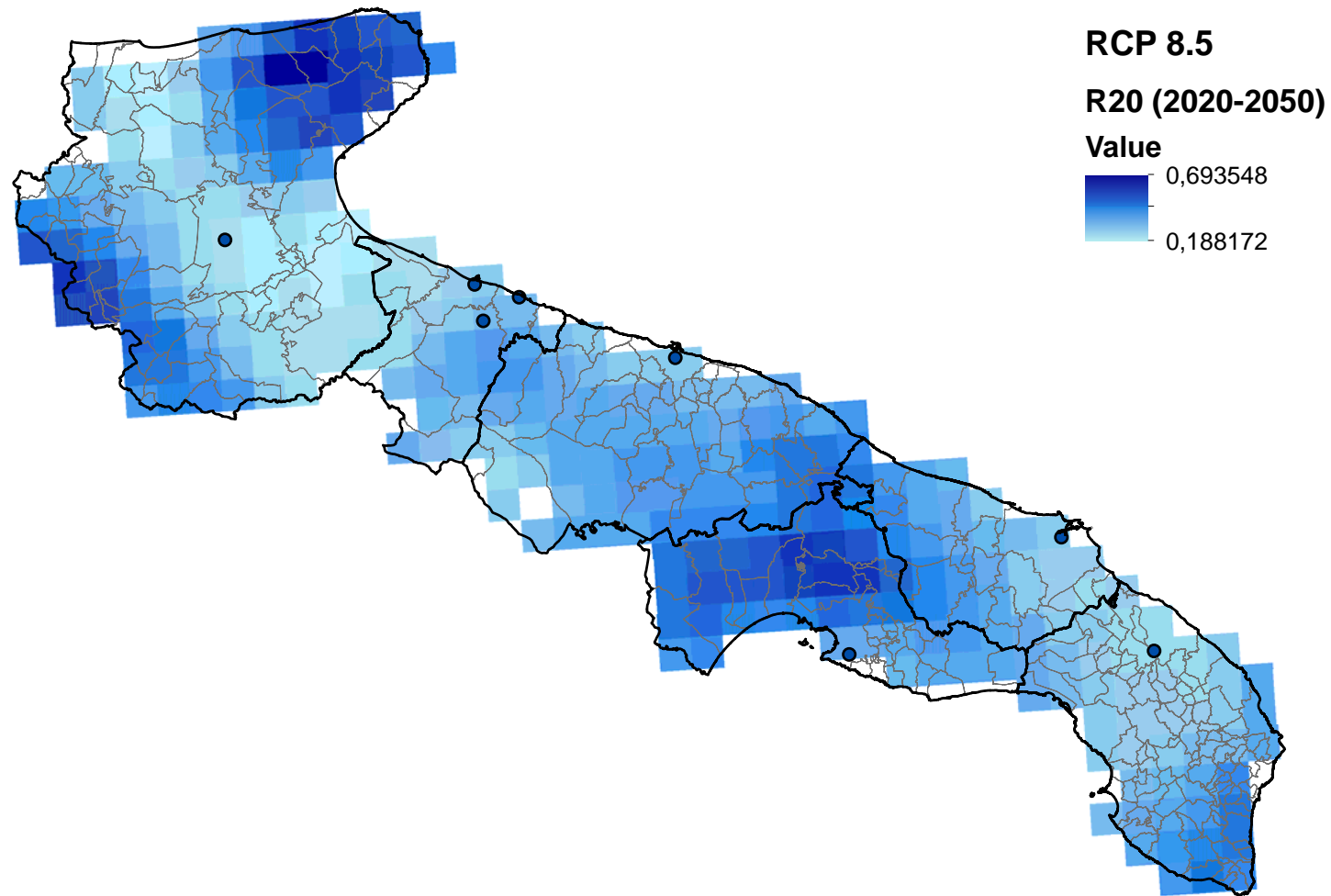
Giorni medi mensili con precipitazione superiore a 20mm





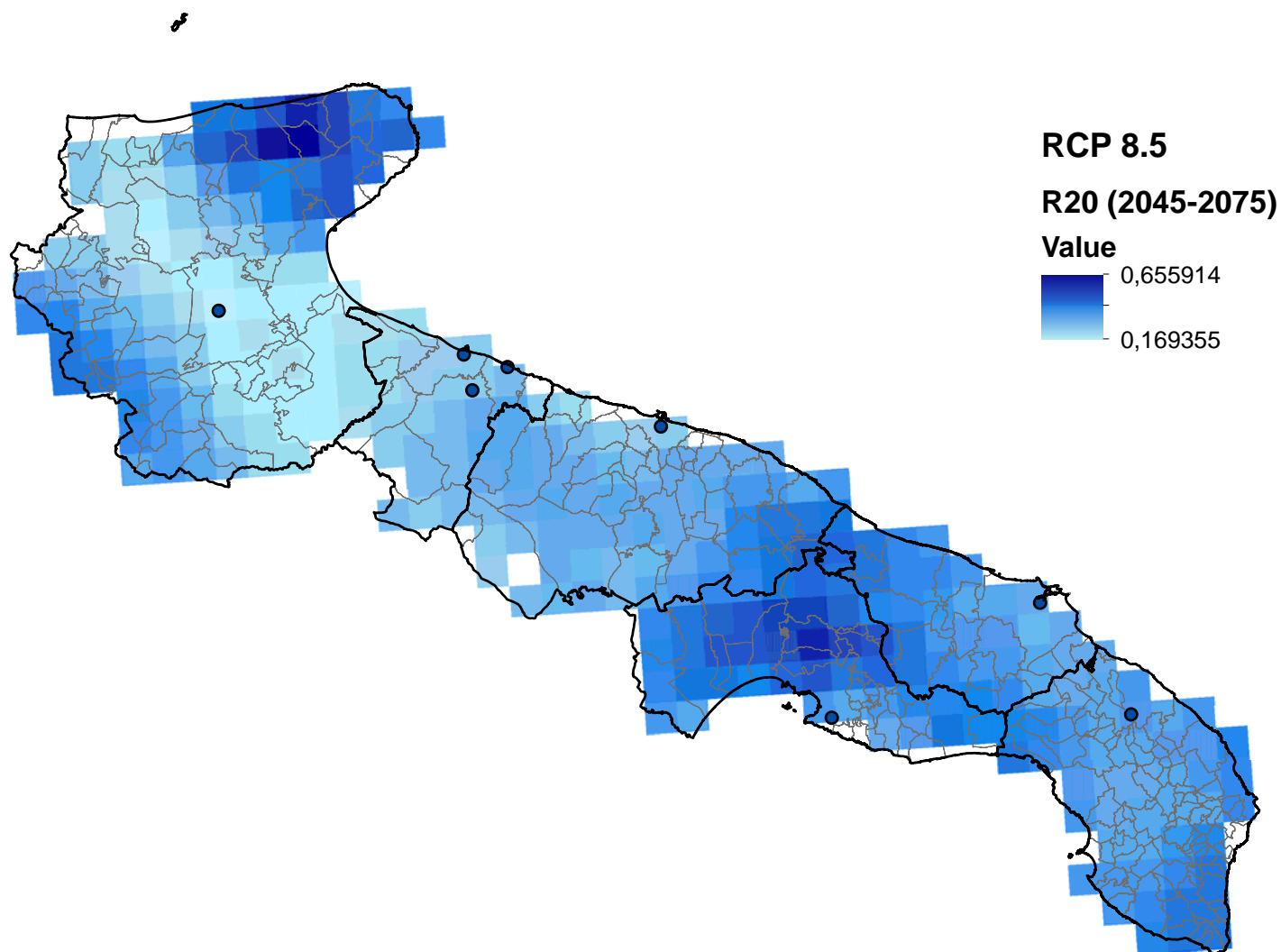




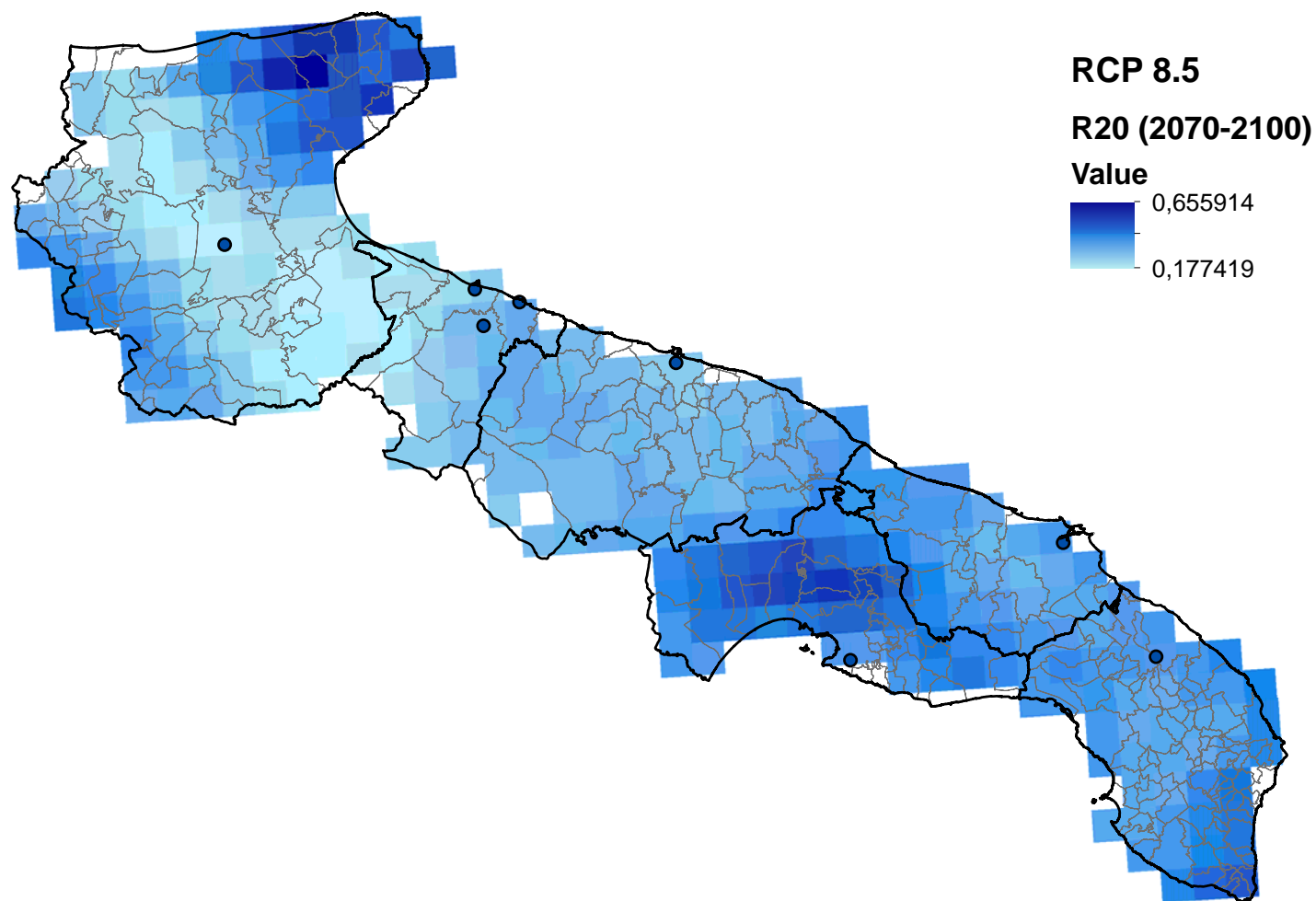


**R20**

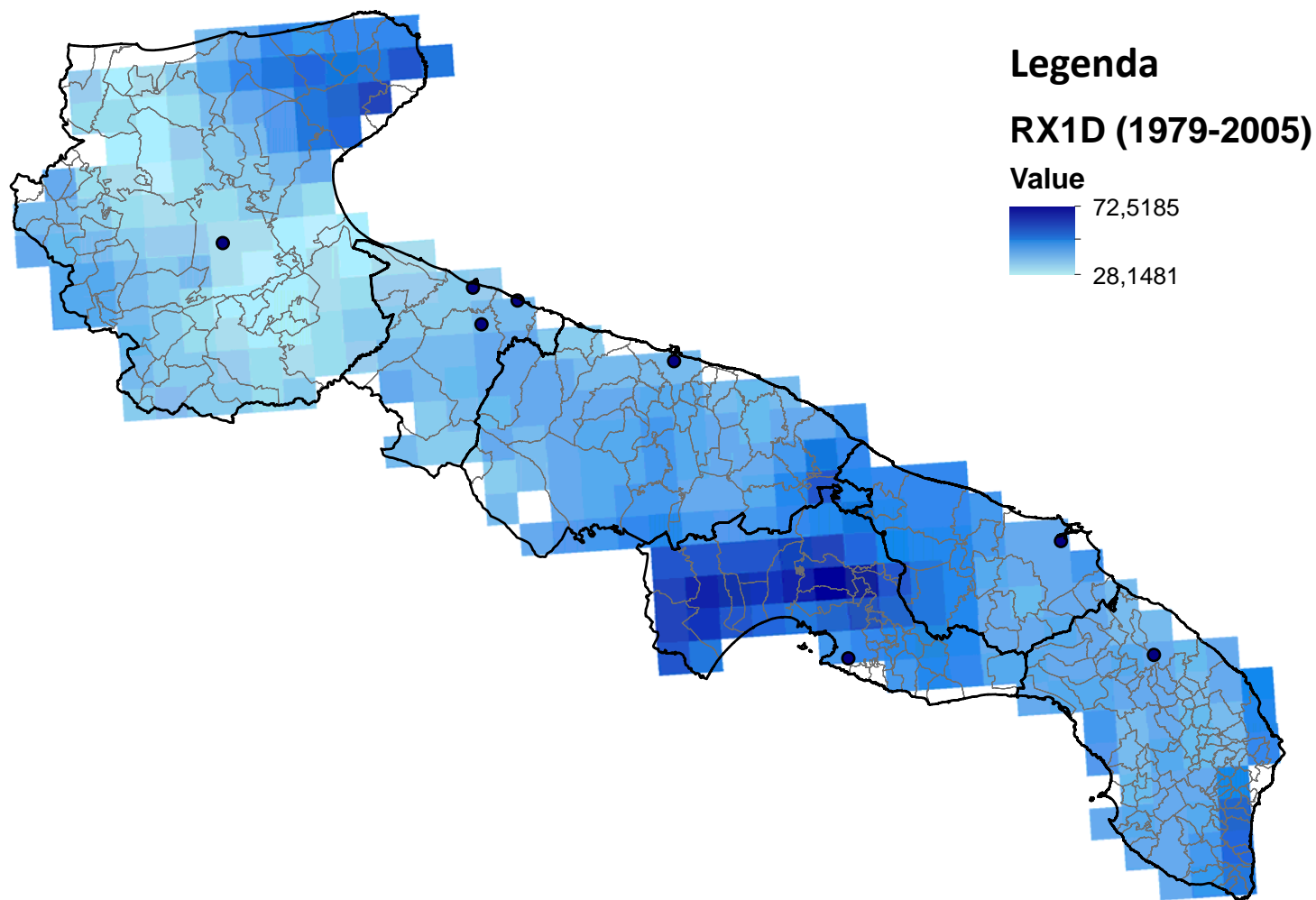
Giorni medi mensili con precipitazione superiore a 20mm



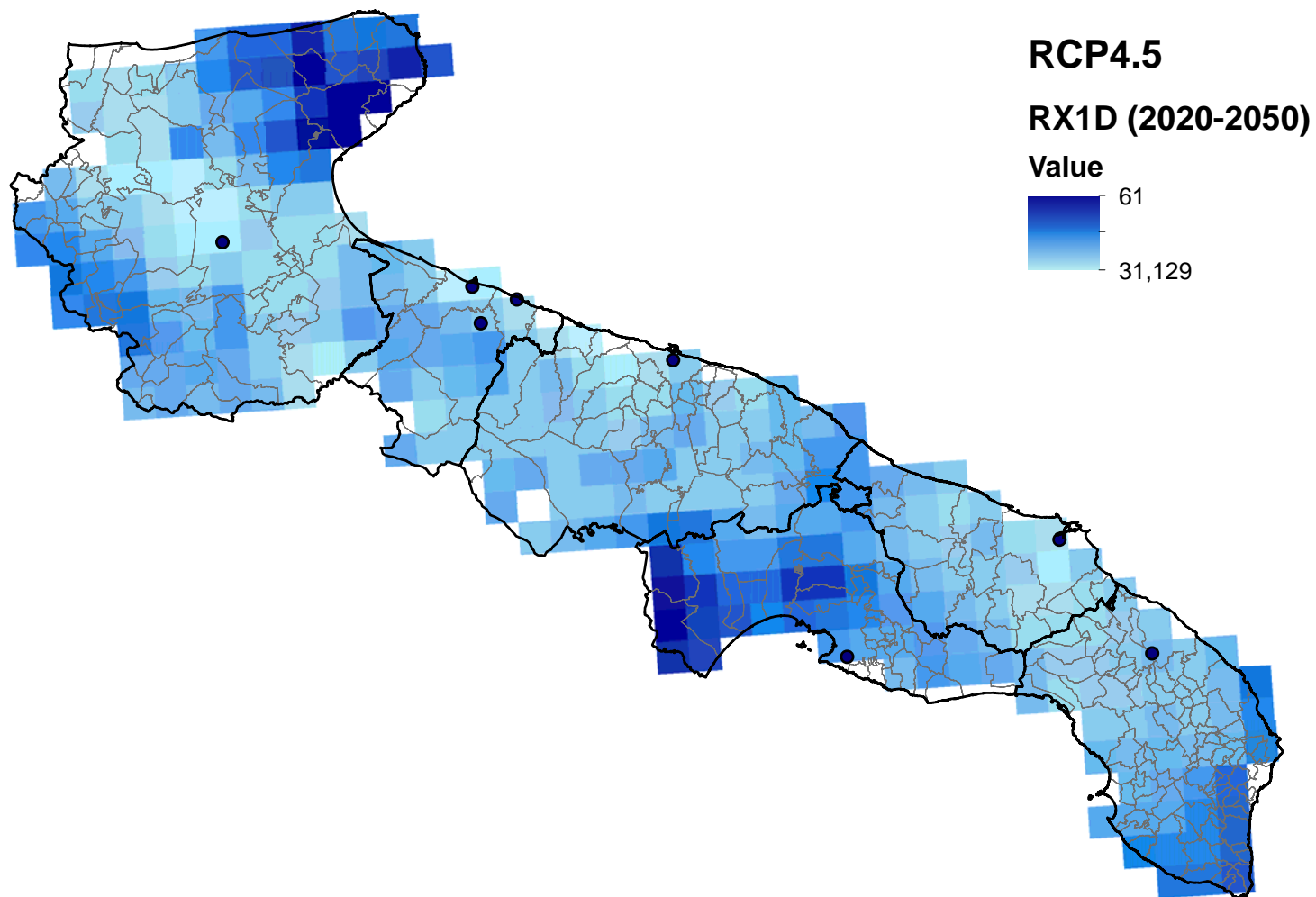




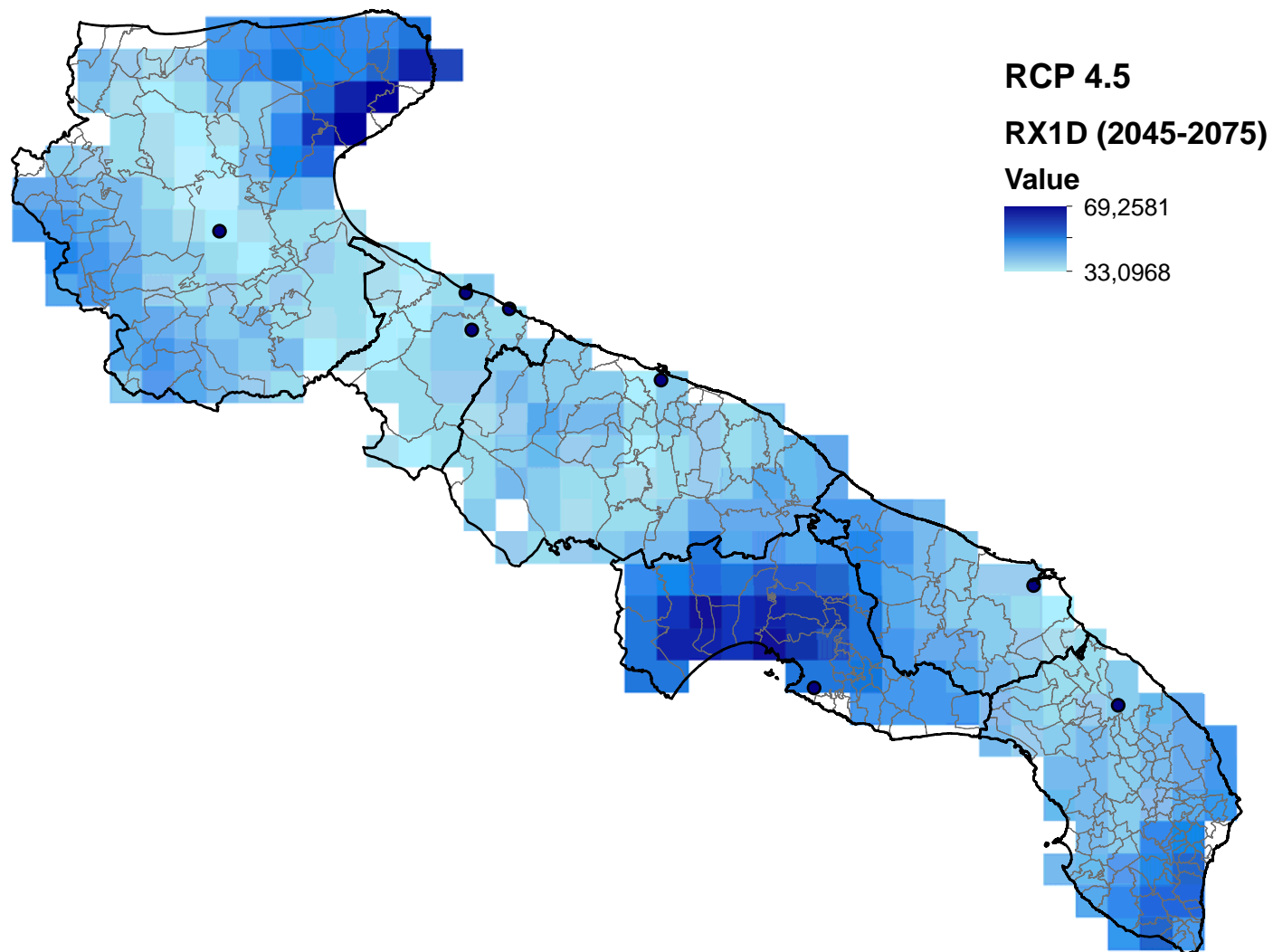
# RX1D Valore massimo della precipitazione giornaliera (mm)



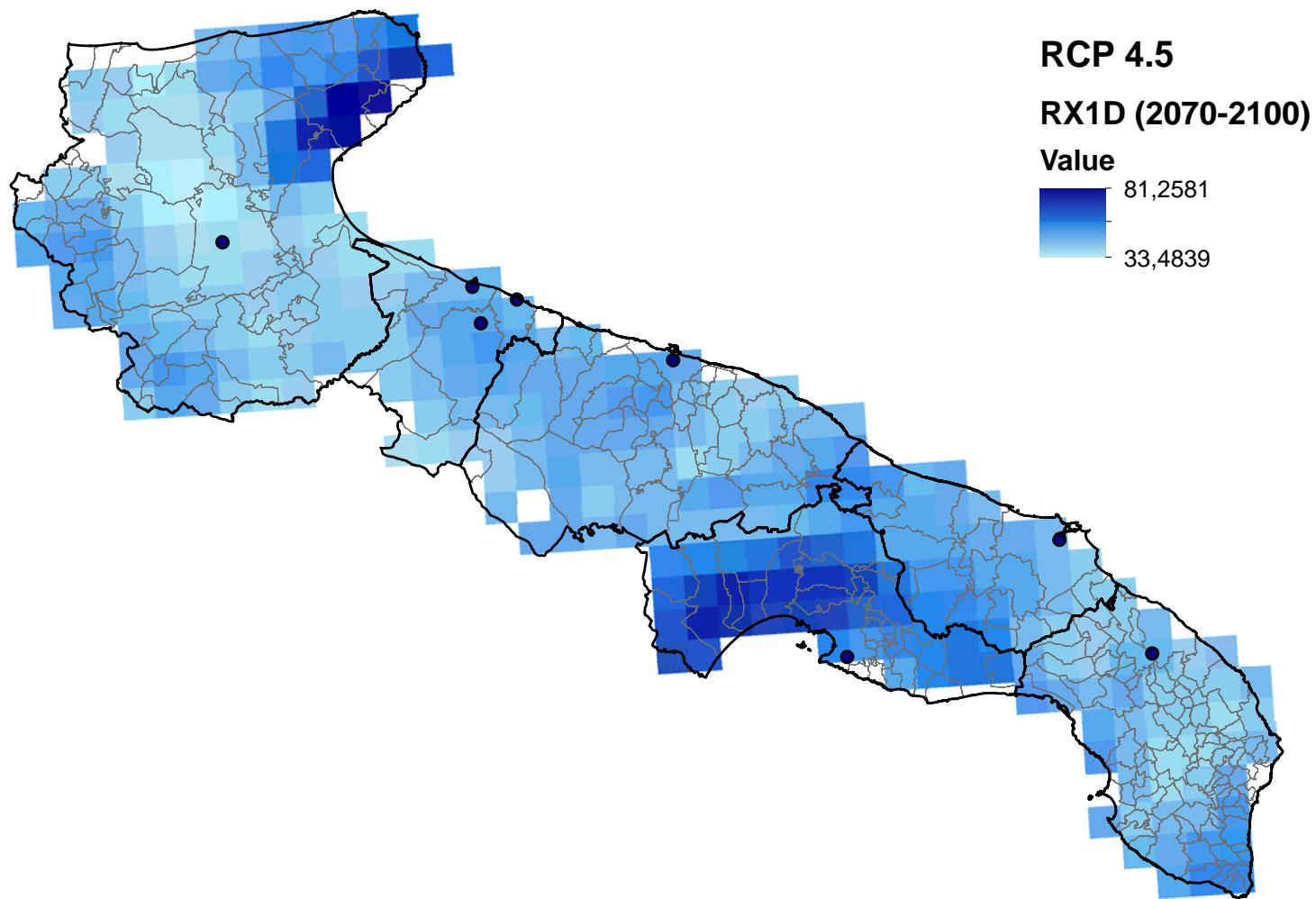
# RX1D Valore massimo della precipitazione giornaliera (mm)



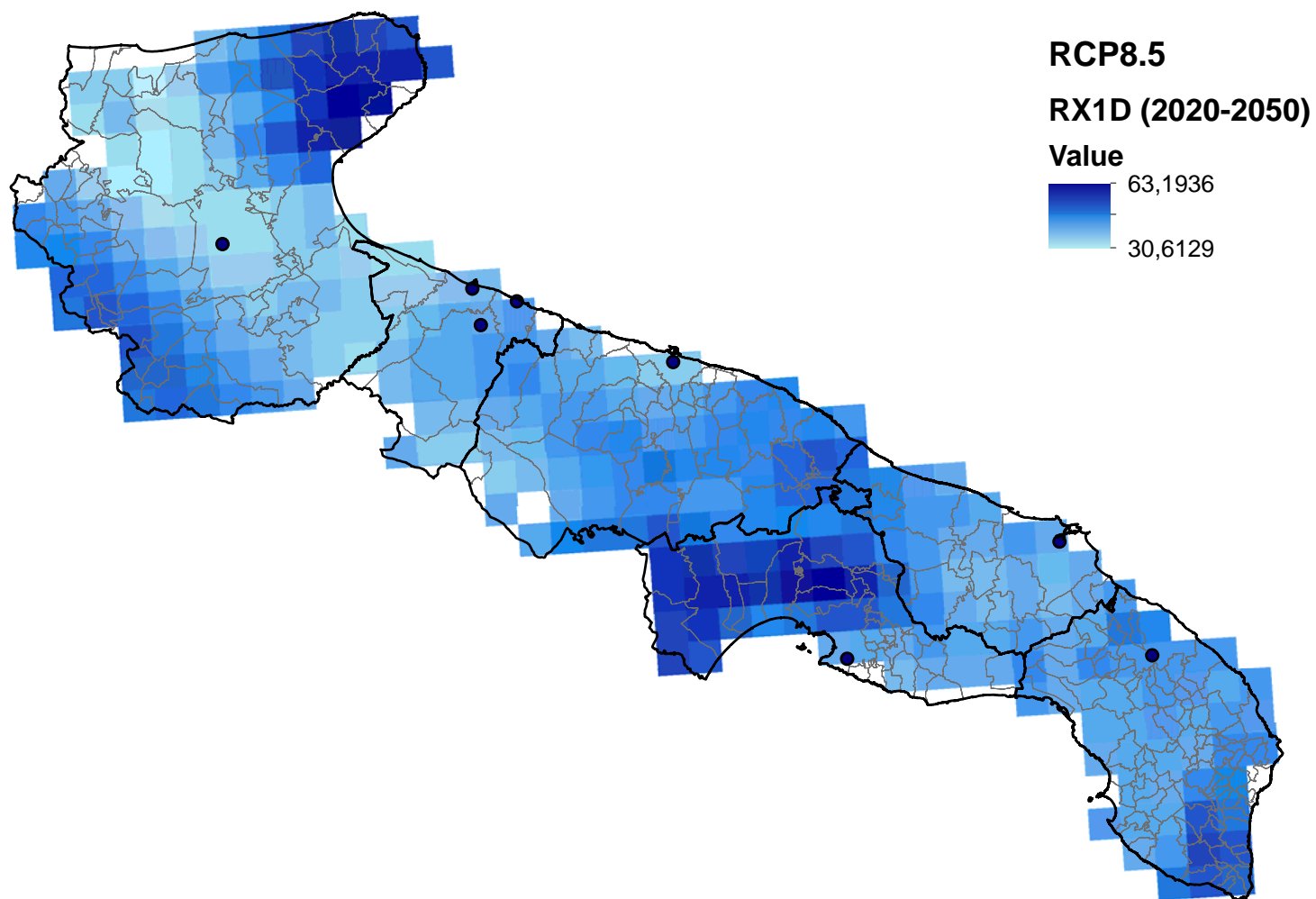
# RX1D Valore massimo della precipitazione giornaliera (mm)



# RX1D Valore massimo della precipitazione giornaliera (mm)

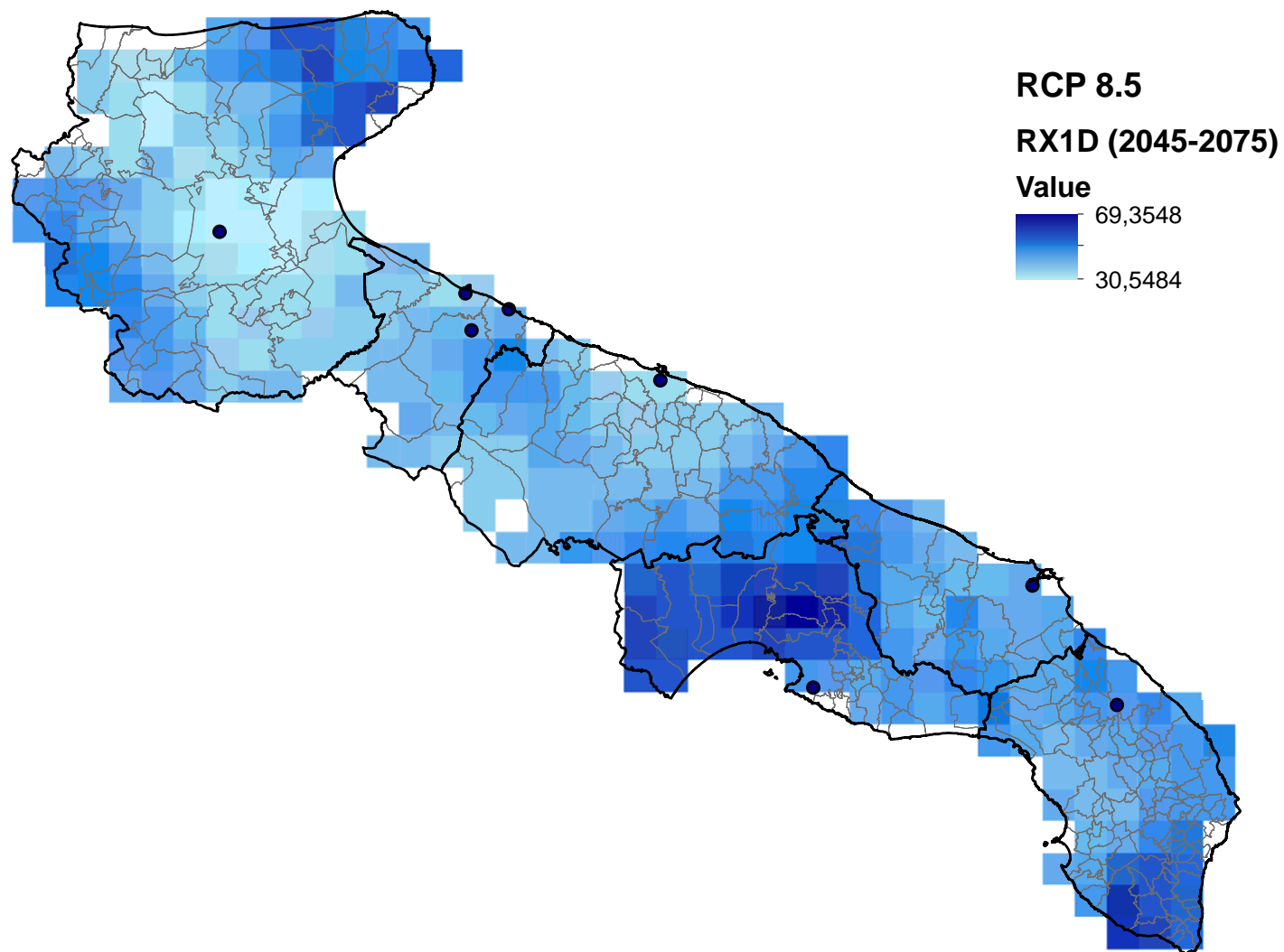


# RX1D Valore massimo della precipitazione giornaliera (mm)





# RX1D Valore massimo della precipitazione giornaliera (mm)



# RX1D Valore massimo della precipitazione giornaliera (mm)

